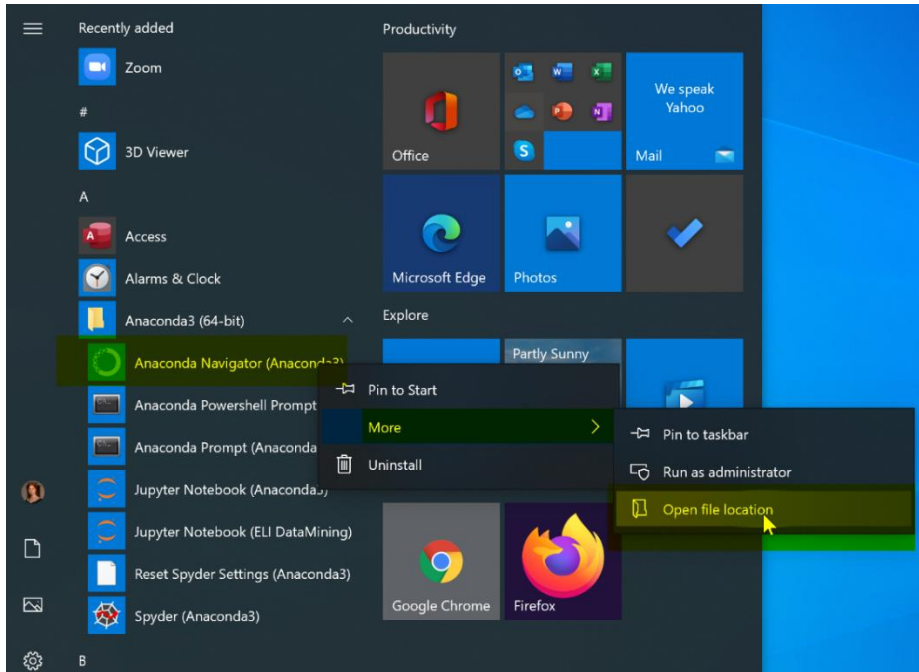


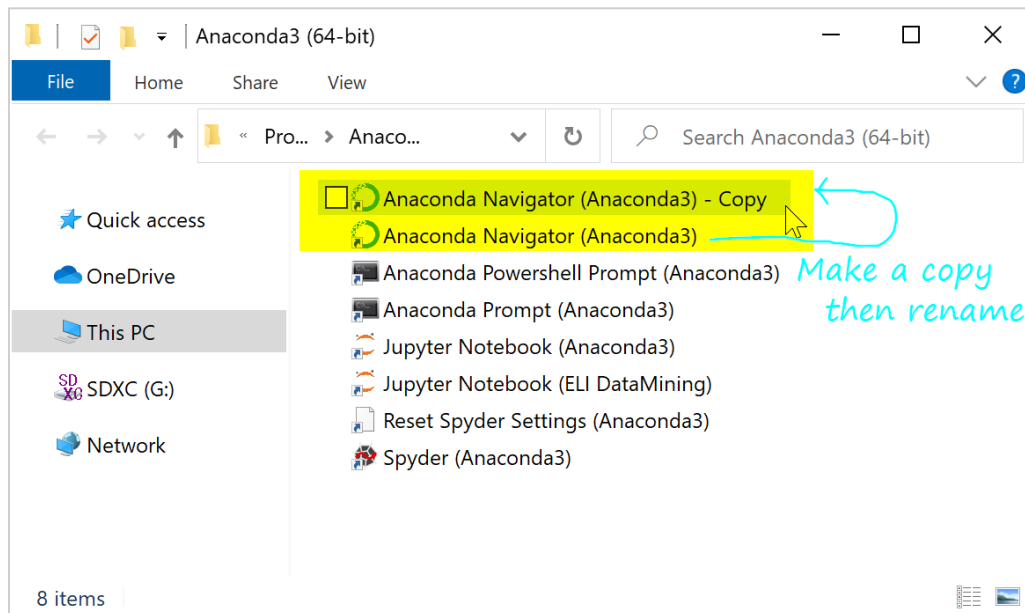
Goal: Anaconda Python does come with IDLE but does not provide a handy app shortcut in Windows 10. So, we'll make one ourselves.

Overall process: make a copy of an existing Anaconda shortcut, then modify it as an IDLE shortcut.

Step 1. Find your Anaconda shortcuts in START menu. Right click "Anaconda Navigator", open up the folder where they are stored.

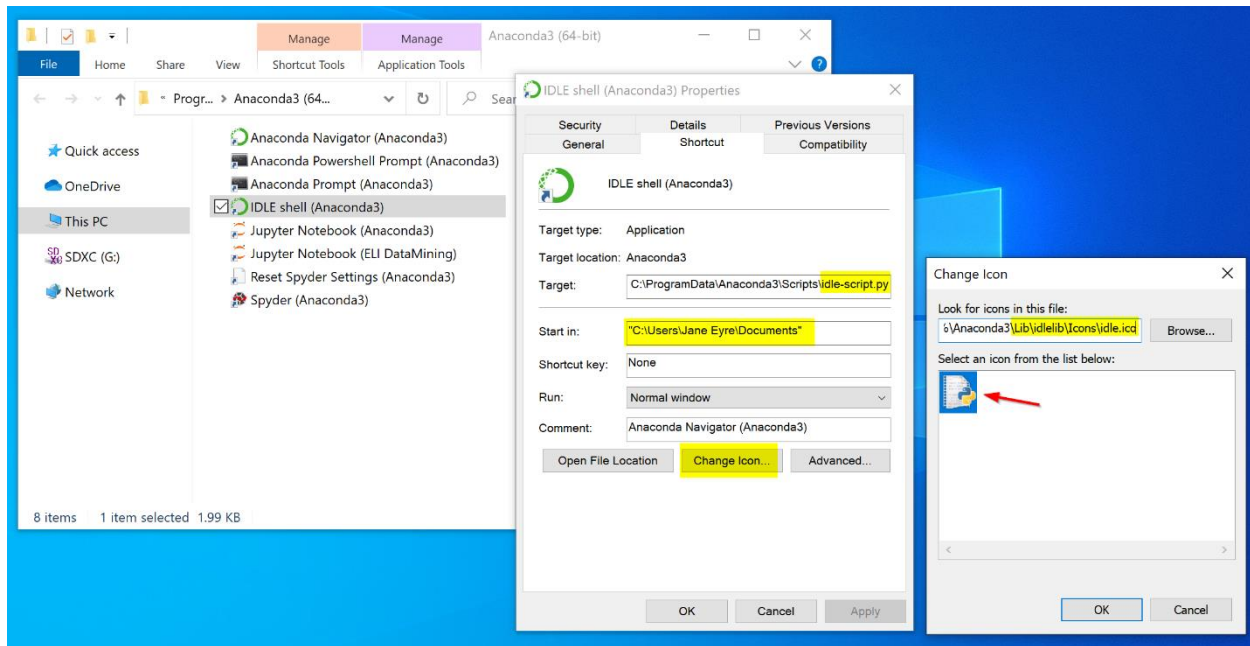


Step 2. Make a copy of your "Anaconda Navigator" shortcut. Then, rename it "IDLE shell (Anaconda3)".



Step 3. In the “Property” of the copy shortcut, change three things:

- Target:** Scroll all the way to the end. Then, replace the last part “anaconda-navigator-script.py” with “idle-script.py”
- Start-in:** Change to your script folder, say “C:\Users\narae\Documents\ling1330”.
- Click “**Change Icon**” button. Replace the last part “Menu\anaconda-navigator.ico” with “Lib\idlelib\Icons\idle.ico”



Step 4. All done! You now have a new shortcut that launches Anaconda’s IDLE shell.

